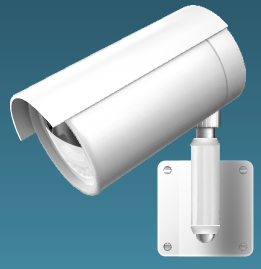




CRIME INCIDENT LOG

The Captis Database operates as a central component to bridge the gap between surveillance & suspect intelligence



Effective and up-to-date crime data around your location specified by crime type, radius, and date range



Gain valuable situational awareness with Captis crime feeds updated every 24hrs



Millions of crime incidents with historical data from over 25,000 government data sources

Access to localized crime intelligence is an essential component in obtaining effective situational awareness. Captis understands that crime can vary greatly within just a few miles and our data does not rely on averages based on vast regional geography.

HISTORICAL CRIME INFORMATION

Access up to 10 years of crime data for a specific radius around your business location, city, and state. Each crime incident includes the time/date of the incident, police case number, crime type, a brief description of the incident, and address.

CRIME MAPPING

Immediately identify crime trends based on a selected radius. Crime information is updated at the same frequency that it is provided by law enforcement so that the information being viewed by our customers is the most current available.

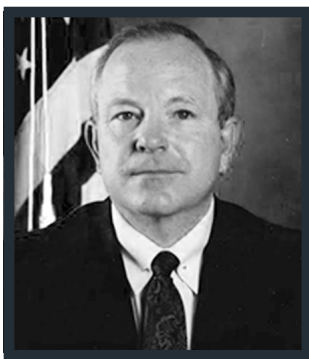
ENTERPRISE CRIME ALERTS

Ideal for large multi-location operations or security-sensitive single location operations, ACT Alerts generate real-time notifications based on user-defined crime types, radius around your location(s), and frequency of occurrence.

CRIME DASHBOARD

Features an interactive crime map with pin-markers of each crime incident over the last 14 days surrounding your location(s), tools to detail crimes over the last 30 days surrounding your location(s), and detailed graphs showing crime fluctuations over the past 6 months surrounding your location(s).

Access to the world's largest private database of over 60 million public criminal files. Includes dossiers of high-risk individuals to include terrorists, money launderers, cartel members, drug dealers and shared 'banned books'.



CHARLES ARCHER

FORMER ASSISTANT FBI DIRECTOR
CHAIRMAN OF LAW ENFORCEMENT COUNCIL

"Suspect identification issues are relevant in all facets of crime, safety, and security. Current technology offers a variety of reactive solutions that do not address the needs of the law enforcement and asset protection community. Now, like never before, we can identify, locate, investigate, and apprehend suspects with Captis Intelligence's game-changing system."

ROHAN GUNARATNA

CAPTIS INTELLIGENCE
MEMBER OF ADVISORY BOARD

"Captis Intelligence understands the importance of exclusive terrorist data being utilized by not only nations and states, but within private industries, where valuable intelligence can prevent fatal events."

